

Parkheath

Sold on Service

Fordwych Road NW2

£1,560 PCM (£360 per week) - Camden Band D



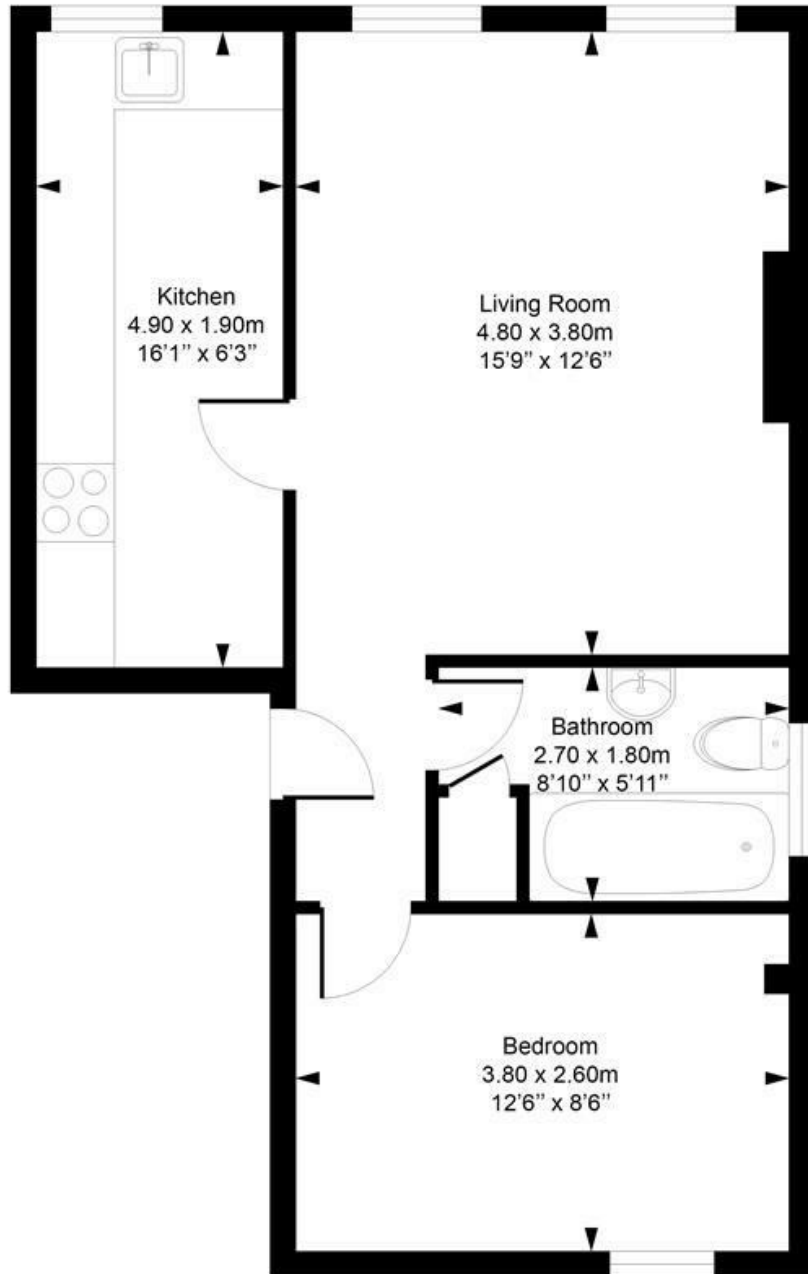
Lovely top floor 1 bedroom apartment
2nd floor of a period property
Fully modernised kitchen with breakfast bar
Well located for access to all West Hampstead
and Kilburn amenities

Bright and spacious
Reception/dining room with wooden floors
Contemporary bathroom suite
Access to a communal garden area (shared with
one other flat)

South Hampstead Office 020 7625 4567
West Hampstead Office 020 7794 7111

Fordwych Road

Approximate Gross Internal Area = 45.5 Sq m / 490 sq ft



Second Floor

Measured in accordance with RICS guidelines. Every attempt is made to ensure accuracy

However all measurements are approximate.

The floor plan is illustrative purposes only and is not to scale

ELLIE CLAIRE PHOTOGRAPHY LTD

www.ellieclairephotography.com

The particulars do not constitute part of an offer or contract. The particulars, including text, photographs and plans, are for the guidance only of prospective purchasers/tenants and must not be relied upon as statements of fact. The descriptions provided therein represent the opinion of the author and whilst given in good faith should not be construed as statements of fact. Nothing in these particulars shall be deemed a statement that the property is in good condition or otherwise or that any services or facilities are in good working order. All measurements are approximate